

# COOPERATIVE CONNECTIONS

## Small Town, Big Dreams

**Tucker Kraft's  
Road to the NFL**  
Pages 8-9

**Electrical Safety in  
Action**  
Pages 12-13





# BOARD REPORT

---



The FEM Board of Directors meet with staff during the March meeting.

A regular meeting of the Board of Directors of FEM Electric was held in Ipswich, South Dakota at 8:30 a.m. on March 21, 2023, pursuant to due call and notice. It being determined that a quorum was present, President Gary Bachman called the meeting to order. Secretary Eric Odenbach kept the minutes of the meeting. The following directors were declared present by roll call: Gary Bachman, Paula Petersen, Kelly Melius, Eric Odenbach, Tom Thorpe. Line Superintendent Rob Vetch, Director of Finance and Benefits Rhonda Tuschner, and Ryan Holien were present.

Gary Bachman welcomed guest employee Jesse Brown.

**Changes to the agenda:** None

**Changes/Additions to Minutes from February 21, 2023, meeting:** none

**Next Meeting Date:** After a review of calendars, directors agreed that the next regular meeting of the board would be on Monday, April 24, 2023, at 8:30 a.m. to be held at FEM Electric Board Room in Ipswich, South Dakota.

Motion by Kelly Melius, seconded by Paula Petersen and carried to approve administrative business.

Motion by Kelly Melius seconded by Eric

Odenbach and carried to acknowledge management and staff reports.

Motion by Tom Thorpe seconded by Paula Petersen to authorize the ordering of a new Ford F550 bucket truck with a delivery date of 2026 for an estimated cost of \$312,000.00 with the understanding this purchase will need final approval in the 2026 annual budget.

The board acknowledged receiving the February Cyber Security report.

## **Resolutions, Contracts, and Nominations:**

Motion by Paula Petersen seconded by Tom Thorpe and carried to approve the review of the following Policies: Policy No. 428, Policy No. 429, Policy No. 430, and Policy No. 432.

Motion by Eric Odenbach seconded by Tom Thorpe, Kelly Melius to approve a loan through the REED fund.

The board acknowledged RESCO's request for Director Candidate Nomination.

## **Membership Business:**

Board acknowledged membership business.

**New Memberships and Member Cancellations:** None

## **Contract:**

Dylan Weisser, Roscoe SD, Shop

## **Capital Credits:**

**Estates – March 2023 – None**

**73 & Older – March 2023 – None**

Value Added Economic Development Loan Committee. Waiting for information.

**Financial Business:** The board acknowledged reviewing the following financial information: The check register for the month of February 2023 contained information on checks #33196 through #33270 and all automatic payments/withdrawals for February 2023 totaling \$715,212.17.

February 2023 financials and 4th Quarter 2022 RUS and CFC Loan Summaries were reviewed.

Motion by Paula Petersen, seconded by Tom Thorpe and carried to approve director and attorney fees.

**Legal Update:** none

## **Meeting Report:**

East River board update was given by Gary Bachman.

A discussion was held on other organization meeting attendance.

The board acknowledged the receipt of the February 22, 2023, Safety Meeting Minutes, any accident reports. Board reviewed March 3, 2023, employee meeting.

**Adjourn:** President Gary Bachman declared the meeting adjourned.

## COOPERATIVE CONNECTIONS

### FEM ELECTRIC ASSOCIATION

(USPS 189-720)

#### Board of Directors

Gary Bachman, President  
Tom Thorpe, Vice President  
Eric Odenbach, Secretary  
Paula Petersen, Treasurer  
Kelly Melius, Asst. Sec./  
Treasurer  
Vaughn Beck, Attorney

#### CEO/General Manager

Scott Moore  
info@femelectric.coop

#### Management Staff

Rob Vetch  
Line Superintendent  
Rhonda Tuscherer  
Director of Finance and  
Benefits

#### Editor's e-mail:

oban@femelectric.coop

FEM ELECTRIC COOPERATIVE CONNECTIONS is the monthly publication for the members of FEM Electric Association, Inc., 800 5th Ave., Ipswich, SD 57451.

FEM Electric Cooperative Connections' purpose is to provide reliable, helpful information to members on electric cooperative matters and better living.

Subscription information: As part of their membership, FEM members devote \$1.00 from their monthly electric payments for a subscription. Nonmember subscriptions are available for \$15 annually. (USPS 189-720) Periodical Postage Paid at Ipswich, SD 57451 and at additional offices.

POSTMASTER: Send address changes to FEM Electric Cooperative Connections, Box 468, Ipswich, SD 57451-0468.

#### How to contact us:

FEM Electric  
PO Box 468 Ipswich, SD  
57451  
Phone: 1-800-587-5880 or  
605-426-6891  
e-mail: info@femelectric.coop  
Website:  
www.femelectric.coop  
Design assistance by SDREA

**FEM Electric is an equal  
opportunity provider and  
employer.**



**Scott Moore**  
**General Manager/CEO**

It's March 31 and Mother Nature isn't playing an early April Fool's joke. It looks like this winter storm is the real thing with a possibility of another winter mix the first week of April. My hope is by the time this article finds its way to your kitchen counter the snow is gone, and while the ground may be somewhat muddy, we'll have a successful growing and construction season. Baby calves will be looking for green grass. Winter has been somewhat longer in our area this year, but it could have been worse. I often think back to those who helped get us to where we are today, before they had the roads, large machinery, vehicles, and modern-day home conveniences. Many agricultural producers in the past had livestock to care for, usually using a loader tractor with limited hydraulics and no cab. Many farm wives not only had the house chores but assisted with some livestock chores that meant carrying feed or water in pails through the cold and snow.

That was my "we don't have it too bad opener", green grass is just around the corner so get the lawn mowers ready and fueled up. It is going to be a busy spring so please remember to be safe and "No Short Cuts".

In the past FEM Electric has shared a bus with another cooperative to get

members up to Basin Electric and Dakota Gasification Company for an overnight informational trip. We have decided to fill the bus with FEM Electric members, educators, employees, and directors. With an ever-changing industry it is important for rural electrics to keep our members informed on the generation, transport, and safety of electricity. Electricity is no different than the industry that you may be part of. It all looks simple until you're informed of all the moving parts or regulations. The bus will leave Ipswich June 12 and return on June 13. Meals, transportation, and lodging will be furnished by FEM Electric. If interested, please contact Sonje Oban at 605 426 6891, 1 800 587 5880 or visit [www.femelectric.coop](http://www.femelectric.coop) for more information.

The electric industry is experiencing the same issues as many other

Continued on pg 6

#### FOLLOW US ON SOCIAL MEDIA

@FEMElectric on



@fem\_electric on



@FEMelectric on



We'll post outage updates, safety tips, news and more to keep our members informed on all the latest from FEM Electric.

## Statement Mailing Dates

April 28, 2023 for April's energy

May 31, 2023 for May's energy

Regardless of the statement mail out date, payments are due in the office by the 9th of the following month.

# Workplace Safety: Avoid Common Electrical Hazards

Contact with or exposure to electricity is one of the leading causes of workplace fatalities. Follow these tips to avoid electrical injury:

### Overhead Power Line Contact

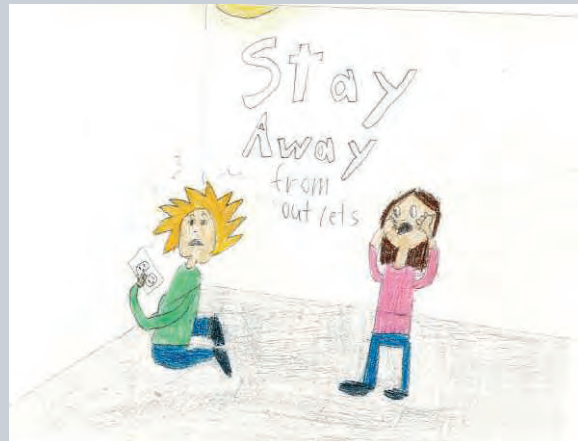
- 46% of all electrical fatalities are caused by contact with overhead power lines
- 57% of overhead power line fatalities were in non-electrical occupations
- Always assume all lines are live and dangerous
- Always look up; be aware of overhead power lines
- Keep yourself and equipment at least 10 feet away from overhead power lines
- Do not touch anything that is in contact with overhead power lines
- Carry equipment, including ladders, horizontally to avoid contact with power lines
- Stay at least 35 feet away from downed lines

### Accidental Contact with Energized Conductors or Parts

- 45% of all electrical fatalities were caused by working on or near energized conductors or parts
- 74% of these fatalities were in electrical occupations
- Always test for voltage before you perform work. Be sure to also test the area around the equipment you are working on to avoid accidental contact with energized equipment
- Always perform a site and risk assessment before conducting work. Hazards exist on and near the equipment you are working on
- When possible, turn off power before conducting work
- Follow proper lockout / tagout procedures
- Avoid complacency. Every job is different, make sure you follow the hierarchy of controls and other electrical safety work practices on every job

### Electrical Safety in the Workplace

- 69% of all electrical fatalities involved non-electrical occupations
- Know when to say when. If you feel unsafe performing a job, say something
- Be aware of potential electrical hazards in the workplace. Avoid electrical rooms and other potentially hazardous areas
- All electrical work should be completed by qualified workers with proper training
- GFCI protection should be installed where electricity and water may come in contact
- Five sources accounted for 92% of all electrical fatalities
  - Overhead power lines
  - Unexpected contact with electricity
  - Working on energized parts
  - Ground faults
  - Damaged wiring



### Power Line Safety

#### Serena Dekrey, age 9

Serena Dekrey, age 9, gives wise advice to readers on electrical safety. She cautions us to be careful around power outlets. Serena is the daughter of Don and Cassandra Dekrey, members of Sioux Valley Energy based in Colman, S.D.

Kids, send your drawing with an electrical safety tip to your local electric cooperative (address found on Page 3). If your poster is published, you'll receive a prize. All entries must include your name, age, mailing address and the names of your parents. Colored drawings are encouraged.



# COMFORTING CASSEROLES

## PHEASANT CASSEROLE

### Ingredients:

1 pheasant  
1/2 cup melted butter  
Bacon grease  
1/2 cup flour  
4 cups milk  
1 tsp. salt  
1/2 tsp. pepper

### METHOD

Mix flour, salt, pepper, and roll pieces of pheasant in the mixture. Brown in bacon grease. In separate pan, mix butter, milk, and 6 T flour. Stir and bring to a boil. Pour over the pheasant that had been put in a baking dish with bacon laid over it. Bake until tender.

**Gail Klipfel**  
Ellendale, N.D.

## TACO CASSEROLE

### Ingredients:

1 1/2 pounds ground beef  
1 package taco seasoning mix  
1 can (16 ounces) pinto beans, drained and rinsed  
1 can (15 ounces) tomato sauce  
1 can (11 ounces) whole kernel corn, drained  
1 cup shredded Cheddar cheese  
1 cup crushed tortilla chips

### METHOD

Preheat oven to 400°F. Brown meat in large skillet on medium-high heat. Drain fat. Stir in seasoning mix, beans, tomato sauce and corn. Bring to boil. Reduce heat to low; simmer 5 minutes. Spoon into 2-quart baking dish. Sprinkle with cheese and tortilla chips. Bake 5 to 10 minutes or until cheese is melted. Serve with assorted toppings, if desired.

**mccormick.com**

## CHICKEN, BROCCOLI, AND RICE CASSEROLE

### Ingredients:

1 lb. chicken tenders  
1 cup long grain rice  
1 1/2 cups chicken stock  
1 cup milk  
2 tsps. garlic powder  
2 tsps. onion powder  
1 1/2 tsps. whole rosemary leaves, crushed  
1/2 tsp. ground black pepper  
1/2 tsp salt  
2 cups broccoli florets  
1 cup shredded Cheddar cheese

### METHOD

Preheat oven to 400°F. Spread chicken and rice in greased 2-quart baking dish. Mix stock, milk and seasonings in medium bowl with wire whisk until well blended. Slow pour over chicken and rice. Cover with foil. Bake 45 minutes. Remove foil. Stir in broccoli. Sprinkle with cheese. Bake, uncovered, 15 minutes longer or until rice has absorbed all the liquid and broccoli is tender.

**mccormick.com**

Please send your favorite recipes to your local electric cooperative (address found on Page 3). Each recipe printed will be entered into a drawing for a prize in December 2023. All entries must include your name, mailing address, phone number and cooperative name.

### Continued from pg 3

industries such as long delivery dates on material and equipment as well as increased cost. We worked for years to reduce our inventory but over the past several years have increased material inventory to ensure that we can complete projects our members are requesting and to maintain our existing facilities. We just ordered a new Ford F550 bucket truck with a delivery date of summer 2026. It is good that we all have our climbing belts and hooks since we may be back to the "Good Old Days" by going up poles one step at a time. We have been doing good, operating in this business environment, but it will be nice to get back to shorter delivery dates and reduced costs.

Our rural economy seems to be staying strong. We have a good number of agricultural producers committed and are looking to expand grain handling facilities and shops. Please call early if you are thinking of adding any additional electrical load. A reminder that FEM Electric has electricians that complete projects on the member's side of the meter. Please call Rob Vetch or Ryan Holien if you are looking to complete a project.

FEM Electric's annual meeting is June 27, 2023. Come enjoy a free meal and get a \$75.00 energy credit on your July statement if you stay until the end of the meeting. We know your time is valuable, but we also believe your annual meeting is an important part of the cooperative business model.



# STAY SAFE AFTER A STORM

## Clean up with care


Once the storm has passed, it is tempting to go straight into yard clean-up mode. However, take time for safety.

Do not go outside if there is a power outage. There could be a downed power line, which could cause electrocution. Sometimes, downed lines can be covered by branches, storm debris, water, snow or ice.

### Keep these additional safety tips in mind:

- **Do not trim trees/branches** within 10 feet of a power line.
- **Read all instructions** and be familiar with equipment you intend to use.
- **Do not use a chainsaw for the first time** during cleanup.
- **Follow all safety recommendations** when using power tools.
- **Carry a ladder horizontally** instead of vertically.
- **Look for overhead power lines** before carrying a ladder.
- **Always look up** for overhead power lines before removing debris from gutters.
- **Take your time.** Rushing can result in serious injury.
- **Wear proper shoes and clothing** when using ladders and power tools.
- **Call your electric utility** to report branches in power lines; never try to remove them yourself.



 Remember, wait until an outage is restored before going outside to assess the damage.

 Safe Electricity.org®

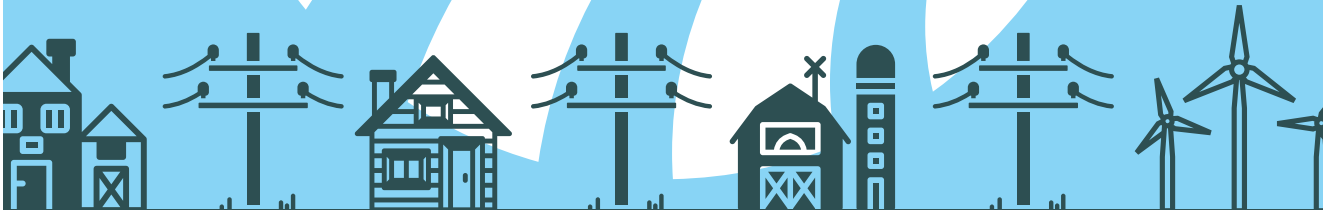
# 75<sup>th</sup> **ANNUAL MEETING**

TUESDAY, JUNE 27TH

DINNER @ 5 PM

MEETING @ 6:30 PM

Ipswich School



## **DON'T MISS THE 75TH ANNUAL MEETING OF THE FEM MEMBERSHIP**

Directors up for Election

Chicken Sandwiches, Mac n Cheese Pulled Pork, and Burgers

**\$500 YOUNG ADULTS LIGHT THE WAY SCHOLARSHIP**

High School Junior and Seniors eligible

*Must attend entire meeting with at least one member parent.*

**\$75 ENERGY CREDIT TO ALL MEMBERS  
WHO ATTEND THE ENTIRE MEETING**

**PLUS \$750 IN GRAND PRIZE DRAWINGS WILL BE GIVEN AWAY  
MUST BE PRESENT TO WIN!**

**KEEP UP TO DATE WITH YOUR COOPERATIVE!**





TUCKER KRAFT

# SMALL TOWN, BIG DREAMS

Kraft refuses to go down amongst a group of Redbird defenders.

## Tucker Kraft's Road to the NFL

**Frank Turner**

frank.turner@sdrea.coop

With a population of 500 residents, Timber Lake, S.D., may seem similar to many small-town communities across the state. The town is known for its scenic beauty, outdoor recreational opportunities, and rich history. However, what really sets Timber Lake apart from the rest is a homegrown NFL prospect: Tucker Kraft.

At an impressive 6-foot-5 and weighing 254 pounds, Kraft has proven himself to be South Dakota's latest up-and-coming football star. Ask any fan of college football and they will tell you that Kraft has the size and skill set to make waves on a professional level.

Luckily, Kraft's talents haven't gone unnoticed. During his latest breakout season as SDSU's All-American tight end, Kraft left an impression on NFL

scouts with his ability to outrun opponents, snatch incredible catches and charge through multiple tackles. A top contributor in nearly every game, Kraft led the Jackrabbits to their first-ever FCS National Championship. The historic season quickly cemented Kraft's place as a top tight end in the NFL Draft.

Kraft recalls the moment everything fell into place: "I just realized that when I had the ball, no one could touch me," he said. "I knew after that season that I was completely capable of playing with the pros."

Timber Lake High School head football coach Ryan Gimbel says he is not surprised to see his former stu-



Tucker Kraft



dent and player on the doorstep of the NFL. Countless hours in the weight room and gym, he said, revealed Kraft to be a student-athlete with incredible drive.

“Seeing the raw natural talent of Tucker spoke for itself and what he could accomplish, but he also had the dedication to take it to that next level,” said Gimbel. “To me, it wasn’t a surprise, and that was our running joke when he left high school – ‘I’ll see you playing on Sundays.’”

Kraft’s journey to the NFL, however, was not without its fair share of adversity. Growing up in Timber Lake, Kraft lost his father to a plane crash when he was only 12 years old. Kraft overcame the childhood tragedy with his two brothers and mother by working tirelessly on and off the field. Honoring his father’s legacy, Kraft followed in his father’s footsteps to become an All-American college star like his father had done before him.

“My brothers took a big part in raising me after my dad died,” said Kraft. “My mom, my aunts and uncles all played a role, but I pride myself on getting a lot of things done independently.”

Steely determination has carried Kraft to the highest level of football, and not even dramatic injury has been able to slow him down. In November Kraft officially declared his name in the NFL draft. Kraft’s friends and family cheered him on as he showed off his incredible strength and skill on national television at the NFL Combine. There, Kraft proved his ability to play alongside the likes of Dallas Goedert, Riley Reiff and South Dakota’s other pro footballers.

“I was kind of star-struck walking in,” said Kraft. “Sitting down with the head coaches of the NFL franchise, you realize that you are at this level now. This is a job interview.”

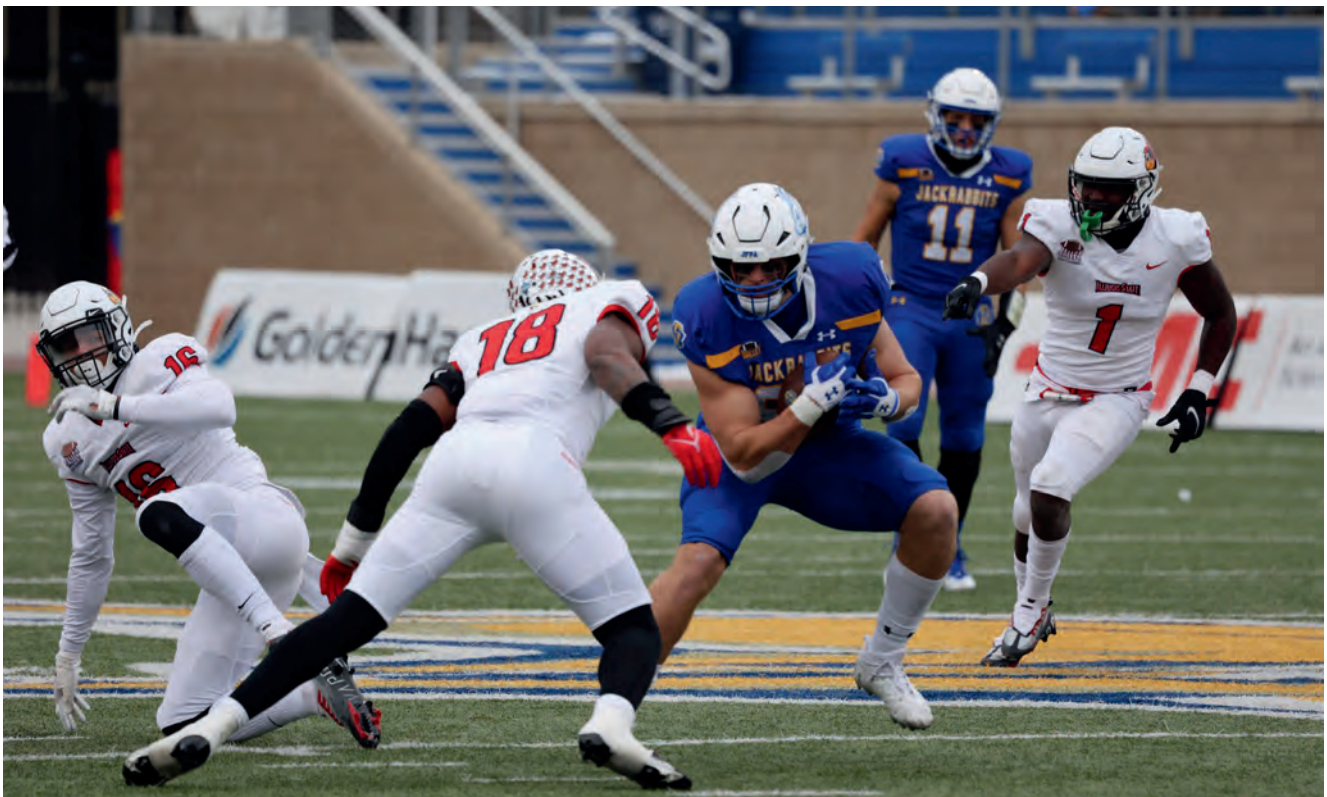
The NFL Combine, however, will

not be the last of Kraft’s time on national television. Ranked as the sixth top tight end, Kraft’s eyes are set on the draft in April. And, although he hails from somewhere small, Kraft plans to loom large on the field as a starting player with great potential.

“I want to go to a team that’s going to use me, whether I’m on the line of scrimmage in the trenches with the big guys or catching balls and getting yards after the catch. I want to make an impact on a team, day one.”

Whatever happens in April, Kraft’s hometown is ready to cheer him on. According to Gimbel, most of Timber Lake is ready to don colors and jerseys that they are not used to wearing to support their hometown kid.

“The buzz in our town has just erupted,” said Gimbel. “Our community, school, and family friends – they all want to see him be successful in the opportunity that he has worked for.”



NFL prospect Tucker Kraft evades a tackler, leading SDSU to a 31-7 win last November against the Illinois State Redbirds.

# CONGRATULATIONS 2023 SCHOLARSHIP WINNERS



**Ashley Ptacek** submitted the winning application for the \$1000 Basin/FEM Electric Scholarship. She is a senior at Ipswich High School, and is the daughter of Perry and Laura Ptacek.

Ashley is involved in numerous activities such as FBLA, cross country, track, Snow Queen, Band, and NHS. She also works as part of the Kids Ministry as a 1st and 2nd grade teacher at New Life Fellowship. She's been a statistician for the boys football and basketball teams.

When Ashley graduates this spring, she has tentative plans to attend Minnesota State University Moorhead to pursue a Master's Degree in athletic training with a minor in business. Her goal is to work at a smaller high school or college so that she provide individualized attention to her students. Coaches and athletic trainers have had a big impact on her life, and she hopes to follow in their footsteps. FEM Electric wishes to extend a hearty congratulations to Ashley, and wishes her well on her future endeavors.

**Teagan Olson** is one of the recipients of the \$500 FEM Electric Scholarship. She is a senior at Ellendale Public School and is the daughter of NaTanya Olson.

Teagan is active in 4-H, FFA, FCCLA, National Honor Society, Accalypics, MathCounts, band and choir. She was also a 2-time All State Band member, sings in her church choir, and plays the organ at her church.

Once she graduates, she intends to pursue a degree in Farm and Ranch Management at Dickinson State University. She hopes to be able to own and manage her own farm some day. FEM Electric would like to congratulate Teagan for her hard work and dedication, and wishes her luck!



**Julia Steward** also won a \$500 FEM Electric Scholarship. She is a senior and is home-schooled. Her parents are Jackie and Joel Steward.

Julia is heavily involved with the Richland Church where she volunteers with the preschool, vacation bible school and as a youth group cafe volunteer. She enjoys playing piano and guitar, hunting, horse riding and training, and is a published writer in Working Ranch Junior Magazine.

After she graduates, Julia plans to attend Lake Area Technical College for Livestock Production and Management. She would like to raise cattle and train horses either at home or on her own farm. If possible, she would like to continue her work in music, writing and in christian ministry. Congratulations to Julia, and FEM wishes her the best of luck!



# A Safe, Happy House

Four Easy Ways to Boost Electrical Safety at Home



May is National Electrical Safety Month.



# ELECTRIC SAFETY IN ACTION

In a controlled demonstration, Journeyman Lineman Brady Gaer uses life-size equipment on the high voltage demonstration trailer to educate students about electricity.

## Empowering the Public to Stay Safe

**Frank Turner**

frank.turner@sdrea.coop

Electric safety is a topic that South Dakota students are excited to engage with. They often ask questions like, “What should you do if your tractor equipment touches a power line?” or “How can birds sit safely on a power line?” or even “What does it look like when something comes in contact with high voltage?”

These are some of the most popular questions Oahe Electric’s Chief Financial Officer Valerie Marso has not only been answering but also demonstrating for more than 20 years.

“They always just have tons of questions,” said Marso. “It’s always fun to hear what they come up with next.”

It’s not just for entertainment, however. Oahe Electric and its employees are committed to realizing their goal of zero accidents at home and at work. Part of preventing tragedy starts with educating the public, especially youth, on how to stay safe around electricity.

In the last year alone, Oahe Electric traveled to nine different schools and led demonstrations for more than 900 students. For Marso, verbal communication is only half the battle when it comes to educating students

about electric safety. The real impact, she said, comes from showing them.

“The visuals and the noise that the high voltage makes really lands in a way that you just can’t convey with words,” said Marso. “It can scare the students a little bit, but I think it gives them a healthy respect for electricity.

Co-op across the state, including Oahe Electric, use three different interactive safety demonstrations to hone their message about safety: Power Town, Co-ops in the Classroom and the high voltage demonstration trailer.

One of the most popular, Power Town, is a small-scale, tabletop model of a few quaint houses attached to a small power grid. The miniature electrical system shows students how electrical current moves through



various items they may encounter in their daily lives, presented in a fun and easy-to-learn format. Line-workers, who work on the real equipment every day, lead the demonstration and teach students about personal protective equipment worn by co-op employees to complete their jobs safely.

Co-op in the Classroom is yet another powerful initiative South Dakota co-ops engage in to promote safety across the state. Working in conjunction with East River's Education and Outreach Program, co-ops meet the students where they are in the classroom to teach local youth the importance of respecting electricity through hand-on lessons that engage and excite the audience.

Lastly, the high voltage demonstration trailer is a portable unit that carries life-size equipment from events to local schools. It's a demonstration that always leaves an impression. Within a safe environment, students get to see actual equipment, such as utility poles, electrical conductors and distribution transformers, in action. Each hour-long demonstration shows what can happen when objects such as animals, trees, ladders and even fruit come into contact with power lines.

"This is equipment that our linemen work on every day, so they are comfortable showing these students how energy works," said Marso.

These demonstrations not only

entertain, but also promote a healthy and safe environment for co-op members and the public. During one of Oahe Electric's latest outreach events, Marso recalled listening to a small group of kids talk about how they sometimes sit on "the green boxes." They were referring to underground transformers. It became a teachable moment that left an impact on both the students and teachers.

"We told them to never touch them," she said. "You never know what going on in there, and it's always better to be safe than sorry. It was at least one person who took something home and actually used it. Moments like that show we are really making an impact with these students."



Oahe Electric Power Supply Specialist Steve Long teaches electric safety using Power Town, a miniature model used in safety demonstrations.

# CAPITAL CREDIT NOTICES

By the end of April, capital credit allocation notices will have been sent out. People who were members for a portion of 2022 but are no longer members will receive their allocation notice in the form of a "Capital Credits Allocation Statement" through the mail. This statement will breakdown the capital credits accrued in 2022. Going forward, no further statements will be sent once the membership is inactive.

0000005991



FEM ELECTRIC  
PO BOX 468  
IPSWICH SD 57451-0468

Office Hours: Monday - Friday 8:00 - 4:30  
Phone: 605.426.6891 or 800.587.5880  
Pay by Phone: 833.699.1827  
Website: [www.femelectric.coop](http://www.femelectric.coop)

**This is your notification of the amount of patronage capital that has been allocated to your capital credits account. If you have any questions please contact the FEM office.**

In order for us to keep our records accurate, it is important that you notify our office of any changes in name, mailing address or in the event of the death of a member.

Current members of FEM Electric (meaning they are actively purchasing power) will receive their allocation notice on their April Statement. In the "Message from FEM" portion of the April statement, a breakdown of capital credits accrued in 2022 will be listed.

\*\*\*\*\*  
JOHN DOE  
1234 STREET NAME  
CITY, STATE, 12345

## CAPITAL CREDITS ALLOCATION STATEMENT

<b>Member Number:</b>	<b>YEAR: 2022</b>
<b>Beginning Balance:</b>	<b>208.96</b>
<b>FEM Allocation:</b>	<b>51.76</b>
<b>East River Allocation:</b>	<b>30.40</b>
<b>Basin Allocation</b>	<b>30.48</b>
<b>Ending Balance</b>	<b>321.60</b>

This is not a bill

This Allocation Notice shows the amount earned and credited to your Capital Credit Account for the year stated above.

Your cooperative is a member-owned, nonprofit provider of electric energy and other valuable services. Capital Credit allocations are based on the cooperative principle of business at cost. Any electric earnings (revenues less expenses) left over at the end of the year are allocated to the members of the cooperative as Capital Credits.

Your Capital Credits are an investment in the cooperative and represent your share of ownership. Capital Credits accumulate in your name and are refunded in cash by action of the cooperative's Board of Directors as the financial condition of the cooperative warrants.

The following is a diagram of the ownership of your Cooperative system:



This institution is an equal opportunity provider and employer

Statement Date	04/28/2023
Account Number	1234567
Payment Due 05/09/2023	

Service Summary	
Previous Balance	82.77
Payments Received 04/04/2023	-82.77
Balance Forward	0.00
Current Charges	83.22
<b>Total Amount Due</b>	<b>83.22</b>

Message from FEM	
<b>YOUR 2022 CAPITAL CREDIT ALLOCATION</b>	
Beginning Balance:	\$2,495.78
FEM Allocation:	\$9.52
East River Allocation:	\$48.11
Basin Allocation:	\$35.77
<b>ENDING BALANCE:</b>	<b>\$2,589.18</b>

Remember, capital credit allocations are not the same as capital credit retirements. Allocations take the margins from the previous calendar year (2022) and distributes them to each member's capital credit "account".

Capital credit retirements happen each June if the FEM Board of Directors feel the financial health of FEM Electric is in good standing. Retirements are made from allocations from previous years, including allocations from up to 18 years ago. Members will see their capital credit retirements as a credit on their June statement.

Inactive members, or people who no longer purchase power from FEM, will receive their capital credit retirement in the form of a check. Once all of the capital credits that were allocated to a membership have been retired, checks will no longer sent from FEM.



# Homan Hardware, LLC Receives Loan from the REED Fund



Homan Hardware, LLC was recently awarded financing when the FEM Electric board approved the recommendation to Rural Electric Economic Development, or *REED*, for a loan to Homan Hardware, LLC for the expansion of their retail hardware store in Faulkton, SD.

Working closely with local banks, other loan funds, and state and federal agencies to finance community and economic development projects, REED provides gap financing to help businesses start and expand business, create jobs, and help communities improve facilities, services, and infrastructure.

Scott Moore says that providing funding to Homan Hardware is a great opportunity to positively impact the lives of many. "In today's economy, employment and economic development continues to be challenging, so being able to assist through the REED Fund is very gratifying for us, knowing we are making a difference in our small communities and rural areas."

"One of FEM Electric's core principles is *Commitment to Community* and the REED Fund is a good example of how we support local economic development," says Moore.

If you are planning a new business or looking to expand, or if your community needs financing for facilities or services, please contact FEM Electric Association at 605-426-6891 or 1-800-587-5880 for an application or REED at (605) 256-8015 for more information.



To Everyone at FEM Electric —  
We want to thank you for your donations of the looking bags, oven mitts, extension cords, pizza cutters & lantern flashlights for our Casino Night Fundraiser! We had a great turn out, and we know it's only because of our local businesses who donate amazing gifts in support of our events —  
Don't forget to join us on July 3rd for the 2023 Freedom Festival & Fireworks!  
Again, Thank you so much for your donation —  
Mina Lake Celebrations Committee



**May 28, 2023**  
**Back When They Bucked**  
 Days of '76 Arena  
 Deadwood, SD  
 800-344-8826

To have your event listed on this page, send complete information, including date, event, place and contact to your local electric cooperative. Include your name, address and daytime telephone number. Information must be submitted at least eight weeks prior to your event. Please call ahead to confirm date, time and location of event.

**MAY 6**  
**Cinco de Mayo Fiesta**  
 Lake Farley Park  
 Milbank, SD  
 605-432-6656

**MAY 17**  
**Norwegian Independence Day**  
 6 p.m.  
 Vivian, SD  
 605-222-3296

**MAY 20**  
**Buggy Museum Open House**  
 10 a.m.  
 Stockholm, SD  
 605-938-4192

**MAY 20**  
**Booth Day**  
 10 a.m.  
 Booth Fish Hatchery  
 Spearfish, SD  
 605-642-7730

**MAY 20**  
**Frühlingsfest and Spring Market**  
 1 p.m.  
 Main Street Square  
 Rapid City, SD

**MAY 25**  
**Wine Walk**  
 5 p.m.  
 Downtown Businesses  
 Aberdeen, SD

**MAY 27**  
**Back When They Bucked All-Day Rodeo**  
 9 a.m.  
 Days of '76 Event Complex  
 Deadwood, SD  
 605-717-7642

**JUNE 11**  
**River Honoring Community Potluck**  
 5 p.m.  
 Clay County Park River Shelter  
 Vermillion, SD  
 605-670-0540

**JUNE 16-18**  
**Trail Days**  
 Ipswich, SD

**JUNE 16-18**  
**Fine Arts In The Hills Show & Sale**  
 Main Street  
 Hill City, SD  
 605-574-2810

**JUNE 18**  
**Father's Day Fishing**  
 10 a.m.  
 Palisades State Park  
 Minnehaha County, SD  
 605-594-3824

**JUNE 21**  
**2023 McCrossan Boys Ranch Golf Classic for Kids**  
 Central Valley Golf Course  
 Hartford, SD  
 605-339-1203

**JUNE 23**  
**Flandreau Fridays**  
 5 p.m.  
 Downtown Flandreau  
 Flandreau, SD

**JUNE 23-25**  
**Tower Days**  
 Bowdle, SD

**JUNE 23-25**  
**Rhubarb Festival**  
 Leola, SD

**JUNE 30-JULY 2**  
**EurekaFest**  
 Eureka, SD

**JUNE 30-JULY 2**  
**Wild West Days**  
 Faulkton, SD

**Note: Please make sure to call ahead to verify the event is still being held.**